

## Macraes Phase 4

# CLOSURE

OVERVIEW | ECOLOGY | ECONOMICS | FRESHWATER | LANDSCAPES | AIR QUALITY | BLASTING & VIBRATION  
| NOISE | TRAFFIC | **CLOSURE**

The mine closure plan for Macraes anticipates the creation of pit lakes in the open pit voids and the rehabilitation of hard stand areas and waste rock landforms that were previously infrastructure areas, open pit walls, in pit backfills and waste rock stacks external to the pits. The overall site will be rehabilitated in keeping with the surrounding landscape and rural setting.

In time, the following outcomes are expected:

- The Frasers Tailings Storage Facility, once full of tailings, would become a pit lake and eventually connect to the Innes Mills Pit Lake after the intervening Frasers backfill becomes submerged.
- The Golden Point Pit will be partially backfilled and the pit lake and run-off would ultimately drain into the Deepdell Creek.
- Cut slopes, waste rock stacks and backfills are designed as long-term stable slopes and would be shaped to fit the nearby landforms and revegetated after mining is complete. Pit margins would be fenced off at an appropriate set back distance to ensure public safety.
- The final land uses after rehabilitation would likely be a mix of pasture, tussock grassland, and possibly, forestry. The overall area balance of these land uses would be determined based on the availability and quality of rehabilitation soils and further detailed closure planning assessments.
- Other factors such as ongoing consultation and policy direction may also affect the final mix of land use.

*This is a summary of the information available in the Assessment of Environmental Effects (AEE).*

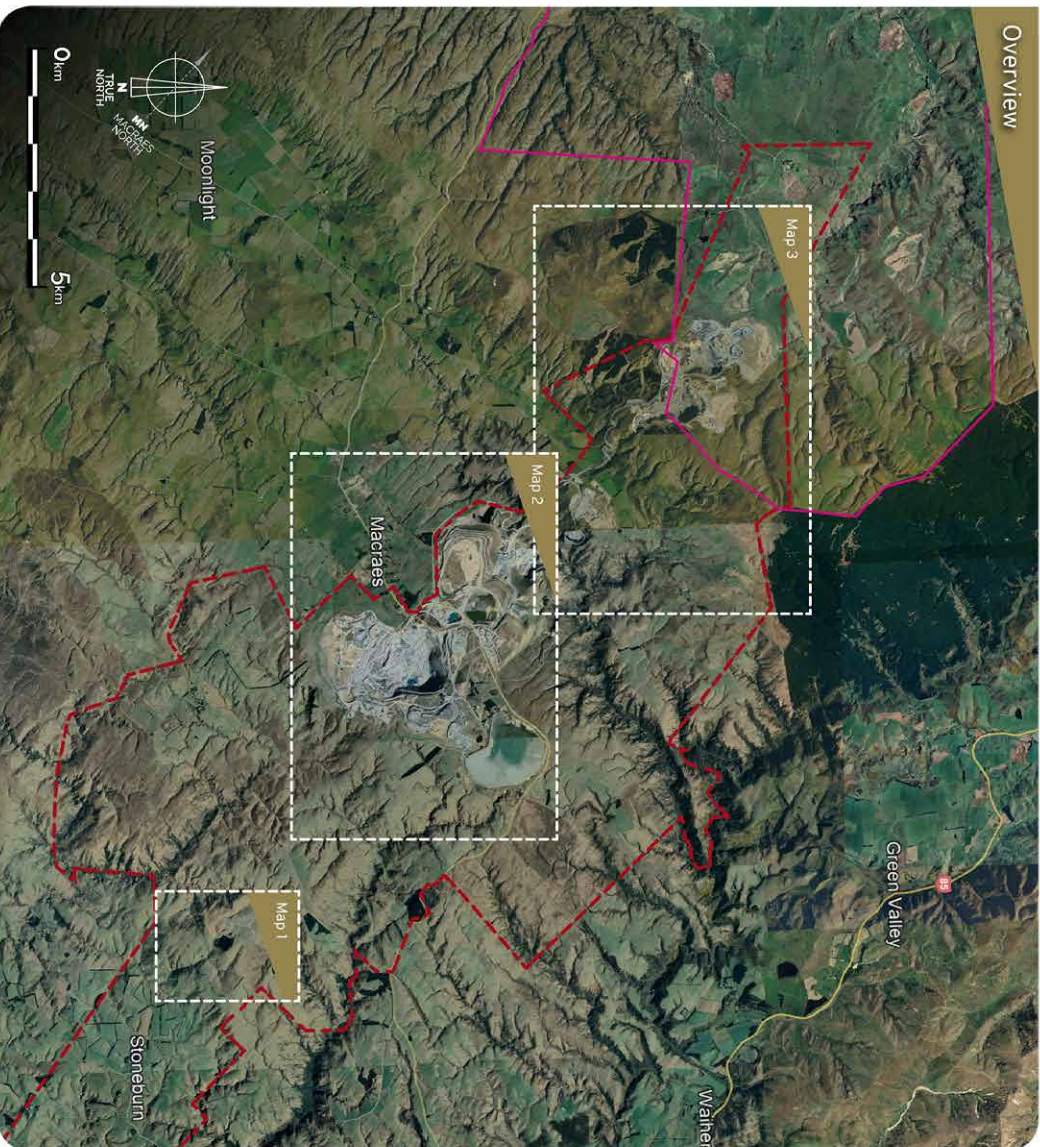
*A full copy of the AEE and supporting documents will be available on the OceanaGold Macraes website following lodgement to councils. [www.oceanagoldmacraes.co.nz/mp4](http://www.oceanagoldmacraes.co.nz/mp4)*

Map of the proposed closure areas on next page.



## The MP4 Closure Overview

Map focus locations and mining area



### Key


-  Mining Permit (41064, 52783)
-  Dunedin City Waitaki District Boundary

## Map 1 - Golden Bar

Golden Bar Waste Rock Stack and Pit Lake



### Key

-  Water
-  Pasture/Grass/Tussock
-  Forestry (Indicative)
-  Wetlands
-  Recreational Trails (Indicative)
-  Pit Lake Fencing (Indicative)
-  Pit Lake Overflow
-  Mining Permit (41064, 52783)











Pit lake levels are illustrative only and spill levels, pathways and spillway requirements will be defined during final closure planning.

Map 2



### Map 2 - RHIMSPIM & Frasers TSF

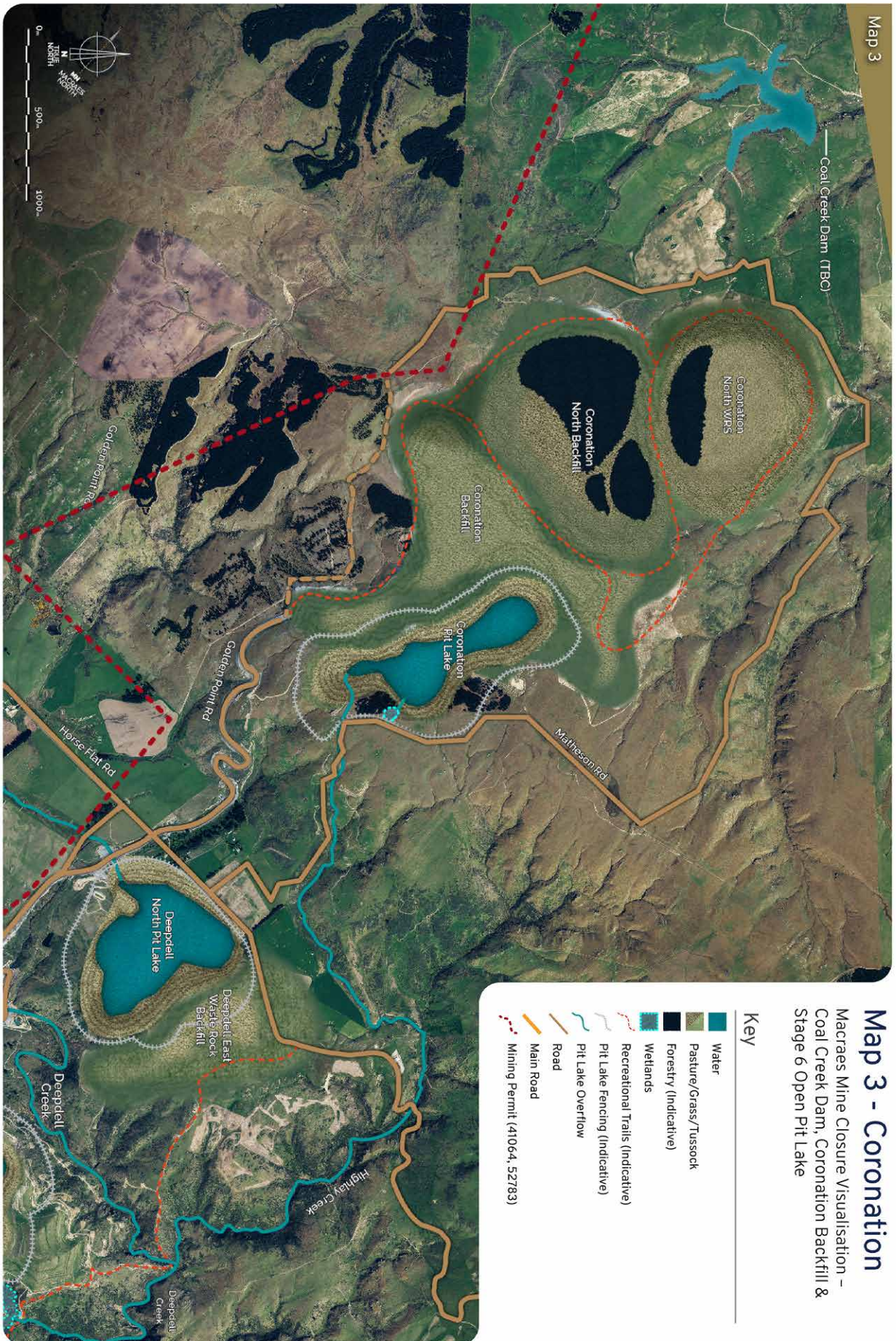
Macraes Mine Closure Visualisation - Waste Rock Stacks, Backfills, Tailings Storage Facilities and Open Pits

- Key**
-  Water
  -  Pasture/Grass/Tussock
  -  Forestry (Indicative)
  -  Wetlands
  -  Recreational Trails (Indicative)
  -  Pit Lake Fencing (Indicative)
  -  Pit Lake Overflow
  -  Road
  -  Main Road
  -  Mining Permit (41064, 52783)



Pit lake levels are illustrative only and spill levels, pathways and spillway requirements will be defined during final closure planning.

Map 3



**Map 3 - Coronation**  
 Macraes Mine Closure Visualisation –  
 Coal Creek Dam, Coronation Backfill &  
 Stage 6 Open Pit Lake

**Key**

-  Water
-  Pasture/Grass/Tussock
-  Forestry (indicative)
-  Wetlands
-  Recreational Trails (indicative)
-  Pit Lake Fencing (indicative)
-  Pit Lake Overflow
-  Road
-  Main Road
-  Mining Permit (41064, 52783)

Pit lake levels are illustrative only and spill levels, pathways and spillway requirements will be defined during final closure planning.